

Ministry of Urban Development & Housing

State Ministry of Rural Housing and Construction & Building Materials Industries Promotion

C I D A
BULLETIN OF

CONSTRUCTION STATISTICS

Publication No : ID/05

Volume 31 No. 02

February - 2021



**A PUBLICATION OF
CONSTRUCTION INDUSTRY DEVELOPMENT AUTHORITY
Savsiripaya, No. 123, Wijerama Mawatha, Colombo 07.**

CIDA BULLETIN OF CONSTRUCTION STATISTICS

CONTENTS

	Page No
Preambles	1
Notes to Tables	2 -7
TABLE 1 : Price Indices for Construction Materials	8– 21
TABLE 2 : Price Indices for Labor Wages	22
TABLE 3 : Price Indices for Dry Hire Rate for Plant and Equipment and Fuel	23
TABLE 4 : Cost Indices for Various Types of Construction and All Construction	24
TABLE 5 : Monthly Cost Indices for Various Types of Construction work	25
Variations in Price Indices	26 – 27

STATISTICS FOR THE NATIONAL CONSTRUCTION INDUSTRY OF SRI LANKA

1.1 PREAMBLE

The vision of CIDA is “To create a reliable and competent Construction Industry for Sri Lanka on par with global standards”. As such providing information and statistics for the stakeholders of the industry is a necessity for the sustenance of the industry and has National importance. CIDA introduced a bulletin of Price and Cost Indices in the year 1990, capitalized it as the base year. Indices can be defined as indicators of inflation in construction inputs such as materials, labour and fuel. Currently, Price Indices of 61 items are published including 55 Materials (M indices), 03 Labour (L indices) and 03 Dry Hire Rates for Plant & Equipment (P indices). Various Types of construction works are computed quarterly including “All Housing” (average of Modern Housing and Semi-Permanent Housing), “Non-Residential Building”, “All Civil Works” (average of Irrigation Major and Minor, Road Works, Water Supply and Drainage and other Civil Works) and “All Construction” (average of main 03 types). Cost Indices including Modern housing, Non-Residential Building and Water supply and Drainage are also published using the monthly variables. Updated monthly with the details collected from designated places and suppliers, and online data collection system has also been planned to be introduced soon.

Currently, the indices published in the Bulletin are applied in the Price Fluctuation formula in the monthly Bill for making claims inappropriate manner as given in the section “Adjustments for Changes in Costs” in the Standard Bidding Document published by CIDA. The Government has approved the adoption of the formula method for the reimbursement of price escalation, following CIDA publication No.ID/07, which is mandatory for the state sector construction projects, with effect from 1st January 1993. Base Index and the Current Index is the two vital parameters used in the Price Fluctuation The formula as monthly variables.

1.2 SIGNIFICANT PRICE CHANGES OF THE CURRENT MONTH

FEBRUARY 2021

Compared with **January 2021**, the Indices of the following Materials have changed in **February 2021** due to the reasons as described.

Construction costs have risen steadily over the past decade, as demand has grown and the prices of building materials have increased. Growth of the construction projects of highways, roads and water supply has induced the high demand for materials.

Therefore, the indices of **M6-Rubble, M7-Metal, M48-Aggregate Base Course (ABC), and M52-Quarry Dust** have increased over 5% due to high demand.

Also, the high cost and scarcity of river sand are some of the main problem faced by the construction industry today. Since quarry dust is used as a substitute to sand, the indices of quarry dust has increased.

The indices of **M26 Electrical Wires** have gone up due to the increase of **LME** copper price.

M15-GI sheet, M46- Zinc Aluminium sheets - Indices are still increasing due to the delays in import consignments/shipments and Dollar fluctuations.

NOTES TO TABLES

Source of information used for deriving of price indices given in Table 1 – 4 are explained in pages from 02 to 07.

Table 1

- 1. M1 Cement – Local (Ex factory)**
Based on the ex factory price of a 50kg bag (Puttalam)
- 2. M2 Cement - Imported**
Based on the average price of a 50kg bag sold by public and private importers
- 3. M3 Cement – Local (Market Price)**
Based on the average price of a 50kg bag sold by public and private dealers
- 4. M4 Cement – Weighted Average**
Based on the weighted average price of a 50kg bag calculated as per consumption ratio of above categories (M1, M2 &M3).
- 5. M5 Cement Blocks**
Based on the average price of a 400 x 200 x 100 mm (solid) size block sold by public and private dealers.
- 6. M6 Rubble**
Based on the average price of a cube (100 cubic feet) of 6” – 9” size rubble delivered to site by private dealers.
- 7. M7 Metal**
Based on the average price of a cube (100 cubic feet) of 20 mm size aggregate delivered to site by private dealers.
- 8. M8 Sand**
Based on the average price of a cube (100 cubic feet) of river sand delivered to site by private dealers.
- 9. M9 Bricks – Hand Cut**
Based on the average price of 1000 Nos of bricks delivered to site by private dealers.

- 10. M10 Bricks – Machine Cut**
Based on the average price of 1000 Nos of bricks delivered to site by private dealers.
- 11. M11 Calicut Tiles**
Based on the average price of 1000 Nos of Calicut tiles (Grade 1) delivered to site by private producers.
- 12. M12 Lime**
Based on the average price of a metric ton of slaked lime sold by private dealers.
- 13. M13 Reinforcement Steel**
Based on the average price of a hundreds weight of 12mm diameter Tor Steel bar sold by private dealers.
- 14. M14 Structural Steel**
Based on the average price of a linear foot of 50 x 50 x 5 mm Angle Iron sold by private dealers.
- 15. M15 GI Sheets**
Based on the average price expressed in square foot rate of a Gauge 26 corrugated sheet 30” x 84” sold by private dealers.
- 16. M16 Asbestos Roofing Sheets**
Based on the average price of a 10’ long corrugated sheet sold by public and private dealers.
- 17. M17 Asbestos Ceiling Sheets**
Based on the average price of a 4’ x 4’ plain sheet sold by public and private dealers.
- 18. M18 Sanitary Ware (Local)**
Based on the average total price of a white wash basin and a water closet including accessories sold by private dealers.
- 19. M19 Sanitary Ware (Imported)**
Based on the average price of an imported wash basin including accessories sold by private dealers.
- 20. M20 PVC Pipes**
Based on the average price of a linear meter of 20 mm diameter PVC water pipe sold by private dealers.
- 21. M21 Formwork Timber**
Based on the average price of a linear foot of Class 3, 1” thick, 6” wide timber plank sold by private dealers.

- 22. M22 General Timber**
Based on the average price of a linear foot of Class 1 timber (100x75 mm size) sold by private dealers.
- 23. M23 Timber Products**
Based on the average price of a standard ordinary plywood door (11/4" thick, 2'9" x 6'9") sold by private dealers.
- 24. M24 Glass**
Based on the average price of a square foot of 3mm plain glass sold by private dealers.
- 25. M25 Door and Window Fittings**
Based on the average price of a pair of 100x75 mm brass butt hinges sold by public and private dealers.
- 26. M26 Electrical Wires**
Based on the average price of a 100 meter wire coil (1/044) sold by private dealers .
- 27. M27 Wall Paint**
Based on the average price of a liter emulsion paint sold by private dealers.
- 28. M28 Wood Paint**
Based on the average price of a liter enamel paint sold by private dealers.
- 29. M29 Cadjan**
Based on the price of 100 pairs obtained from the District Price Fixing Committee, Colombo.
- 30. M30 Bitumen 80/100 (Drum Form)**
Based on the price of a liter of Bitumen 80/100 (Drum form) sold by Ceylon Petroleum Corporation.
- 30A. M30A Bitumen 80/100 (Bulk Form)**
Based on the weighted average prices of a liter of Bitumen 80/100 (Bulk form) sold by Ceylon Petroleum Corporation & price of a liter of decanted Bitumen 80/100 sold by private dealers.
- 30B. M30B Bitumen 60/70 (Drum Form)**
Based on the price of a liter of Bitumen 60/70 for (Drum Form) sold by Ceylon Petroleum Corporation.
- 30C. M30C Bitumen 60/70 (Bulk Form)**
Based on the weighted average prices of a liter of Bitumen 60/70 (Bulk Form) sold by Ceylon Petroleum Corporation & price of a liter of decanted Bitumen 60/70 sold by private dealer.

- 31. M31 Terrazzo**
Based on the average price of a square foot of in-situ terrazzo (dark colours) laid by contractors.
- 32. M32 Floor Tiles**
Based on the price of a 300 mm x 300 mm homogeneous white floor tile supplied by local manufacturer.
- 33. M33 Wall Tiles**
Based on the price of a 300 mm x 300 mm white wall tiles manufactured by local manufacturer.
- 34. M34 Granite Tiles**
Based on the average price of a 300 mm x 300 mm tile sold by private dealers.
- 35. M35 Colour Pigment**
Based on the average price of a Kilogram of Red Cement (imported) sold by private dealers.
- 36. M36 Aluminium Doors, Windows & Partitions**
Based on the average price of a square foot of Aluminum door installed by contractors.
- 37. M37 Aluminum Suspended Ceiling**
Based on the average price of a square foot of Aluminum framed acoustic paneling ceiling installed by contractors.
- 38. M38 Electrical Fittings**
Based on the weighted average price of Ceiling Fan, Plug Base, Trip Switch sold by private dealers.
- 39. M39 Ready Mixed Concrete**
Based on the average price of a cubic meter of Grade 20 ready mixed concrete sold by private dealers.
- 40. M40 High Tensile Steel Wire**
Based on the average price of a metric ton of imported 5 mm diameter high tensile steel wires.
- 41. M41 Pre-stressed Bridge Beams**
Based on average price of a 40'0" long bridge beam manufactured by SEC and SD & CC.
- 42. M42 Concrete Lamp Post (Pre-stressed)**
Based on average price of a 30' 0" long lamp post manufactured by SEC and SD & CC.

43. M43 Precast Concrete Components for Bridges , Roads and Building

Based on weighted average price of Fence Posts , Paving Slabs, Kerbs Uprights , Handrails manufactured by SEC and SD & CC.

44. M44 Hume Pipes

Based on average price of a 3' 0" diameter 8' 0" long hume pipe manufactured by SEC and SD & CC.

45. M45 Earth

Based on average price of a cube (100 cubic feet) of Type II earth delivered to site by private supplier within 10 km distance.

46. M46 Zink Aluminum Sheets

Based on average price of a square foot of 0.47mm coloured roofing sheets manufactured by private producer.

47 . M47 Ductile Iron Pipe

Based on average price of a meter of 80mm – 300mm diameter pipe imported from different countries.

48 . M48 Aggregate Base Course (ABC)

Based on average price of a cube (100cu.m) of ABC delivered to site by private dealers within 10km.

49 . M49 Chain Link

Based on average price of a linear foot of 4'0" high, Gauge 10 PVC coated chain link (green) sold by private dealers.

50 . M50 Stainless Steel

Based on the average price of a linear foot of a 3 ft high standard hand rail.

51 . M51 Cement Roof Tiles

Based on average price of a standard type roof tile supplied by private dealers.

52 .M52 Quarry Dust

Based on the average price of a cube (100cubic feet) of quarry dust supplied to the site by private dealers.

53 .M53 Gabion Box

Based on average price of a box made with 2.7mm diameter Zinc coated and PVC coated wires (hexagonal type) supplied by private dealers.

54 .M54 Geo-Textile

Based on average price of a square meter of 280 g/m² (2.5mm gauge) polypropylene Geo-textile sold by private dealers.

55 .M55 Road Marking Paint

Based on the average price of a kilogram of white and yellow colour reflectorized thermoplastic Road Marking powder sold by private dealers.

Table 2

1. L1 Skilled Labour

Based on average daily wage rate paid to masons , carpenters, plumbers, bar benders , electrician and plant operator by public and private contractors.

2. L2 Semi – Skilled Labour

Based on average daily wage rate paid to mechanic helper by public and private contractors.

3. L3 Unskilled Labour

Based on average daily wage rate paid to unskilled labourers by public and private contractors.

Table 3

1. P1 Small Equipment

Based on average of percentage increased in daily dry hire rates of Concrete mixer, Bob cat ,Air Compressor, Tractor with Trailer , Tractor with Bowser, Poker Vibrator, Generator, Water Pump, Boom Truck, Small Truck, Double Drum Roller & Rammer.

2. P2 Heavy Equipment

Based on average of percentage increased in daily dry hire rates of Front end loader, Motor grader, Backhoe loader, Vibratory roller, Tipper, Water bowser, Crawler excavator, Crawler tractor, Mobile crane, Crawler crane, Asphalt paver, Pneumatic tyred roller, Bitumen distributor & Chip spreader.

3. P3 Fuel

Based on dealer's price of a liter of auto diesel. (Information from Ceylon petroleum Corporation)

Table 4 Cost indices of various types of construction work computed quarterly.

Table 5 Monthly cost indices of various type of construction work.

TABLE 1 : PRICE INDICES FOR CONSTRUCTION MATERIALS

Base Year - 1990 (AVG)

M1 CEMENT - Local (Ex-factory Price)

YEAR	JAN	FEB	MAR	APR	MAY	JUN	JUL	AUG	SEP	OCT	NOV	DEC	AVG
1990	93.4	93.4	93.4	93.4	93.4	93.4	93.4	103.7	103.7	103.7	117.6	117.6	100.0
	1991 , 1992 . 1993 , , 2010 , 2011,2012,2013,2014,2015,2016												
2017	620.9	620.9	620.9	620.9	620.9	620.9	620.9	620.9	620.9	620.9	620.9	620.9	620.9
2018	620.9	620.9	640.9	640.9	640.9	640.9	640.9	640.9	640.9	640.9	657.6	657.6	640.3
2019	657.6	700.0	731.0	731.0	731.0	731.0	731.0	731.0	731.0	731.0	731.0	696.6	719.4
2020	696.6	696.6	696.6	696.6	696.6	696.6	696.6	696.6	696.6	696.6	696.6	696.6	696.6
2021	696.6	696.6											

M2 CEMENT - Imported

YEAR	JAN	FEB	MAR	APR	MAY	JUN	JUL	AUG	SEP	OCT	NOV	DEC	AVG
1990	91.3	91.3	88.2	90.0	94.9	100.2	100.7	103.3	118.8	113.4	104.3	103.6	100.0
	1991 , 1992 . 1993 , , 2010 , 2011,2012,2013,2014, 2015,2016												
2017	479.8	479.8	479.8	479.8	479.8	479.8	479.8	479.8	479.8	479.8	479.8	479.8	479.8
2018	479.8	479.8	495.3	495.3	495.3	495.3	495.3	495.3	495.3	495.3	508.2	508.2	494.9
2019	508.2	541.0	565.0	565.0	565.0	565.0	565.0	565.0	565.0	565.0	565.0	548.0	556.8
2020	548.0	548.0	548.0	548.0	548.0	548.0	548.0	548.0	548.0	548.0	548.0	548.0	548.0
2021	548.0	548.0											

M3 CEMENT - Local (Market Prices)

YEAR	JAN	FEB	MAR	APR	MAY	JUN	JUL	AUG	SEP	OCT	NOV	DEC	AVG
1990	93.2	93.2	88.8	93.2	93.2	87.7	98.7	104.2	120.6	115.1	106.9	105.3	100.0
	1991 , 1992 . 1993 , , 2010 , 2011,2012,2013,2014,2015,2016												
2017	492.1	492.1	492.1	492.1	492.1	492.1	492.1	492.1	492.1	492.1	492.1	492.1	492.1
2018	492.1	492.1	508.0	508.0	508.0	508.0	508.0	508.0	508.0	508.0	521.2	521.2	507.5
2019	521.2	554.8	579.4	579.4	579.4	579.4	579.4	579.4	579.4	579.4	579.4	568.0	571.5
2020	568.0	568.0	568.0	568.0	568.0	568.0	568.0	568.0	568.0	568.0	568.0	568.0	568.0
2021	568.0	568.0											

M4 CEMENT - (Weighted Average Prices)

YEAR	JAN	FEB	MAR	APR	MAY	JUN	JUL	AUG	SEP	OCT	NOV	DEC	AVG
1990	92.1	92.1	89.4	91.4	94.2	96.1	98.7	103.6	116.0	111.7	107.7	106.9	100.0
	1991 , 1992 . 1993 , , 2010 , 2011,2012,2013,2014 , 2015,2016												
2017	512.2	512.2	512.2	512.2	512.2	512.2	512.2	512.2	512.2	512.2	512.2	512.2	512.2
2018	512.2	512.2	528.7	528.7	528.7	528.7	528.7	528.7	528.7	528.7	542.5	542.5	528.3
2019	542.5	577.5	603.1	603.1	603.1	603.1	603.1	603.1	603.1	603.1	603.1	581.8	594.1
2020	581.8	581.8	581.8	581.8	581.8	581.8	581.8	581.8	581.8	581.8	581.8	581.8	581.8
2021	581.8	581.8											

Table 1 Continues.....

Base Year - 1990 (AVG)

M5 CEMENT BLOCKS

YEAR	JAN	FEB	MAR	APR	MAY	JUN	JUL	AUG	SEP	OCT	NOV	DEC	AVG
1990	96.0	99.2	99.2	96.0	96.0	96.0	97.9	97.9	97.7	100.0	112.4	111.9	100.0
	1991, 1992 . 1993 , ,2010 ,2011,2012,2013,2014 ,2015 ,2016												
2017	632.3	632.3	632.3	632.3	632.3	632.3	643.4	643.4	643.4	643.4	643.4	643.4	637.8
2018	661.3	661.3	674.9	674.9	674.9	674.9	674.9	683.4	683.4	683.4	683.4	683.4	676.2
2019	683.4	683.4	683.4	683.4	683.4	683.4	683.4	683.4	683.4	683.4	683.4	683.4	683.4
2020	683.4	683.4	683.4	683.4	683.4	683.4	683.4	683.4	716.9	716.9	716.9	716.9	694.6
2021	716.9	716.9											

M6 RUBBLE

YEAR	JAN	FEB	MAR	APR	MAY	JUN	JUL	AUG	SEP	OCT	NOV	DEC	AVG
1990	94.3	95.4	96.1	98.5	99.0	99.2	99.2	100.9	101.1	103.6	104.5	108.1	100.0
	1991, 1992 . 1993 , , 2010 ,2011,2012,2013,2014 ,2015,2016												
2017	687.3	687.3	687.3	687.3	693.7	693.7	693.7	693.7	704.7	704.7	704.7	704.7	695.2
2018	720.8	720.8	720.8	720.8	733.0	733.0	751.7	751.7	751.7	751.7	751.7	751.7	738.3
2019	751.7	751.7	751.7	751.7	770.6	770.6	770.6	770.6	770.6	770.6	770.6	770.6	764.3
2020	770.6	770.6	770.6	770.6	746.7	746.7	746.7	746.7	746.7	746.7	746.7	746.7	754.6
2021	746.7	843.3											

M7 METAL

YEAR	JAN	FEB	MAR	APR	MAY	JUN	JUL	AUG	SEP	OCT	NOV	DEC	AVG
1990	97.7	99.0	97.7	101.9	96.9	94.4	99.5	100.8	101.7	101.1	103.0	106.3	100.0
	1991, 1992 . 1993 , ,2010 ,2011,2012,2013,2014 ,2015,2016												
2017	378.2	378.2	378.2	378.2	382.0	382.0	382.0	382.0	388.0	388.0	388.0	388.0	382.7
2018	394.7	394.7	394.7	394.7	399.7	399.7	404.0	404.0	404.0	404.0	404.0	404.0	400.2
2019	404.0	404.0	404.0	404.0	410.3	410.3	410.3	410.3	410.3	410.3	410.3	410.3	408.2
2020	410.3	410.3	410.3	410.3	380.2	380.2	380.2	380.2	380.2	380.2	380.2	380.2	390.2
2021	380.2	405.2											

M8 SAND

YEAR	JAN	FEB	MAR	APR	MAY	JUN	JUL	AUG	SEP	OCT	NOV	DEC	AVG
1990	96.5	96.5	94.8	96.5	93.1	93.1	100.3	100.3	104.7	102.5	107.9	113.8	100.0
	1991, 1992 . 1993 , ,2010 ,2011,2012,2013,2015 ,2016												
2017	3100.4	3135.5	3160.2	3160.2	3232.5	3275.8	3300.5	3340.9	3413.7	3437.4	3487.1	3502.4	3295.6
2018	3502.4	3502.4	3516.2	3516.2	3547.6	3552.6	3592.1	3592.1	3592.1	3612.8	3612.8	3612.8	3562.7
2019	3612.8	3612.8	3612.8	3612.8	3612.8	3612.8	3612.8	3612.8	3612.8	3612.8	3612.8	3612.8	3612.8
2020	3612.8	3612.8	3454.0	3454.0	3454.0	3454.0	3454.0	3454.0	3511.1	3511.1	3511.1	3631.1	3509.5
2021	3631.1	3631.1											

Table 1 Continues.....

Base Year - 1990 (AVG)

M9 BRICKS (Hand Cut)

YEAR	JAN	FEB	MAR	APR	MAY	JUN	JUL	AUG	SEP	OCT	NOV	DEC	AVG
1990	90.1	92.2	103.5	102.4	102.4	100.3	101.3	101.1	101.4	102.9	100.5	101.8	100.0
	1991, 1992 . 1993 , ,2010 ,2011,2012,2013,2014,2015,2016												
2017	1698.7	1698.7	1698.7	1698.7	1715.6	1715.6	1715.6	1730.0	1730.0	1751.2	1771.8	1771.8	1724.7
2018	1771.8	1771.8	1771.8	1785.0	1785.0	1785.0	1785.0	1785.0	1785.0	1785.0	1785.0	1785.0	1781.7
2019	1785.0	1785.0	1785.0	1785.0	1785.0	1785.0	1785.0	1785.0	1785.0	1840.8	1840.8	1857.4	1800.3
2020	1857.4	1810.6	1810.6	1810.6	1810.6	1810.6	1810.6	1810.6	1810.6	1810.6	1810.6	1810.6	1814.5
2021	1810.6	1810.6											

M10 BRICKS (Machine Cut)

YEAR	JAN	FEB	MAR	APR	MAY	JUN	JUL	AUG	SEP	OCT	NOV	DEC	AVG
1990	94.2	94.2	100.6	100.6	100.6	100.6	100.6	100.6	101.1	101.6	102.6	102.6	100.0
	1991, 1992 . 1993 , ,2010 ,2011,2012,2013,2014,2015,2016												
2017	482.4	482.4	482.4	482.4	494.6	494.6	494.6	494.6	494.6	494.6	497.9	497.9	491.1
2018	497.9	539.9	539.9	539.9	539.9	539.9	539.9	539.9	539.9	539.9	539.9	539.9	536.4
2019	539.9	539.9	539.9	539.9	539.9	539.9	539.9	539.9	539.9	539.9	539.9	629.0	547.3
2020	629.0	629.0	629.0	629.0	629.0	629.0	629.0	629.0	629.0	629.0	629.0	629.0	629.0
2021	629.0	629.0											

M11 CALICUT TILES

YEAR	JAN	FEB	MAR	APR	MAY	JUN	JUL	AUG	SEP	OCT	NOV	DEC	AVG
1990	89.2	89.2	103.0	103.0	103.5	99.0	103.5	102.8	98.1	101.1	105.3	102.2	100.0
	1991, 1992 . 1993 , ,2010 ,2011,2012,2013,2014,2015,2016												
2017	813.2	813.2	813.2	813.2	852.8	852.8	852.8	852.8	852.8	852.8	875.3	875.3	843.4
2018	875.3	930.0	930.0	930.0	930.0	930.0	930.0	930.0	930.0	930.0	930.0	930.0	925.4
2019	930.0	930.0	930.0	930.0	930.0	930.0	930.0	930.0	930.0	930.0	930.0	930.0	930.0
2020	930.0	930.0	930.0	930.0	976.5	976.5	976.5	976.5	976.5	976.5	976.5	976.5	961.0
2021	976.5	976.5											

M12 LIME

YEAR	JAN	FEB	MAR	APR	MAY	JUN	JUL	AUG	SEP	OCT	NOV	DEC	AVG
1990	95.1	95.1	95.1	95.1	95.1	95.1	95.1	95.1	119.9	99.6	100.8	119.1	100.0
	1991, 1992 . 1993 , ,2010 ,2011,2012,2013,2014 ,2015,2016												
2017	512.9	512.9	512.9	518.2	518.2	518.2	518.2	518.2	531.9	531.9	531.9	531.9	521.4
2018	543.7	543.7	543.7	543.7	550.1	550.1	550.1	550.1	550.1	550.1	550.1	550.1	548.0
2019	550.1	550.1	550.1	550.1	550.1	577.1	577.1	577.1	577.1	577.1	577.1	577.1	565.9
2020	577.1	590.9	590.9	590.9	590.9	590.9	590.9	590.9	590.9	590.9	590.9	590.9	589.8
2021	590.9	590.9											

Base Year - 1990 (AVG)

M13 REINFORCEMENT STEEL

YEAR	JAN	FEB	MAR	APR	MAY	JUN	JUL	AUG	SEP	OCT	NOV	DEC	AVG
1990	99.4	99.4	99.4	99.4	99.4	99.4	98.4	99.4	97.8	103.4	101.9	102.8	100.0
	1991, 1992, 1993, ,2010,2011,2012,2013,2014,2015,2016												
2017	560.4	560.4	574.0	574.0	574.0	574.0	574.0	643.0	643.0	643.0	643.0	643.0	600.4
2018	643.0	643.0	643.0	643.0	643.0	643.0	643.0	643.0	652.2	710.6	710.6	714.8	607.4
2019	714.8	714.8	714.8	714.8	714.8	714.8	714.8	714.8	714.8	714.8	714.8	714.8	714.8
2020	714.8	714.8	714.8	714.8	714.8	783.1	783.1	783.1	783.1	783.1	783.1	787.4	755.0
2021	827.0	837.4											

M14 STRUCTURAL STEEL

YEAR	JAN	FEB	MAR	APR	MAY	JUN	JUL	AUG	SEP	OCT	NOV	DEC	AVG
1990	86.0		94.6	94.6	100.4	98.5	98.5	98.5	98.5	110.2	116.9	117.4	100.0
	1991, 1992, 1993, ,2010,2011,2012,2013,2014,2015,2016												
2017	515.4	515.4	515.4	515.4	515.4	517.2	517.2	517.2	517.2	517.2	517.2	517.2	516.4
2018	520.0	520.0	520.0	520.0	520.0	520.0	520.0	520.0	520.0	520.0	520.0	520.0	520.0
2019	555.9	562.0	562.0	562.0	562.0	562.0	562.0	562.0	562.0	562.0	562.0	562.0	561.5
2020	562.0	562.0	562.0	562.0	562.0	584.5	584.5	584.5	584.5	584.5	584.5	584.5	575.1
2021	617.6	617.6											

M15 GI SHEETS

YEAR	JAN	FEB	MAR	APR	MAY	JUN	JUL	AUG	SEP	OCT	NOV	DEC	AVG
1990	95.3	94.3	98.3	99.8	99.8	99.8	99.8	99.3	99.9	101.5	104.9	107.2	100.0
	1991, 1992, 1993, ,2010,2011,2012,2013,2014,2015,2016												
2017	512.6	512.6	512.6	512.6	512.6	512.6	535.2	535.2	535.2	535.2	535.2	535.2	523.9
2018	566.0	566.0	566.0	566.0	566.0	566.0	566.0	566.0	566.0	566.0	566.0	566.0	566.0
2019	566.0	580.0	580.0	580.0	580.0	580.0	580.0	580.0	580.0	580.0	580.0	580.0	578.9
2020	580.0	580.0	580.0	580.0	580.0	580.0	580.0	580.0	580.0	580.0	580.0	688.3	589.1
2021	718.7	790.3											

M16 ASBESTOS ROOFING SHEETS

YEAR	JAN	FEB	MAR	APR	MAY	JUN	JUL	AUG	SEP	OCT	NOV	DEC	AVG
1990	95.6	95.6	95.6	95.6	95.6	95.6	95.7	95.7	108.0	108.4	109.1	109.7	100.0
	1991, 1992, 1993, ,2010,2011,2012,2013,2014,2015,2016												
2017	469.9	469.9	469.9	469.9	469.9	469.9	469.9	469.9	469.9	469.9	469.9	469.9	469.9
2018	469.9	469.9	469.9	469.9	469.9	469.9	469.9	469.9	469.9	482.0	492.6	492.6	474.7
2019	492.6	495.4	495.4	495.4	495.4	495.4	495.4	495.4	512.9	512.9	512.9	512.9	501.0
2020	512.9	512.9	512.9	512.9	512.9	512.9	512.9	512.9	512.9	512.9	512.9	512.9	512.9
2021	512.9	512.9											

Table 1 Continues.....

Base Year - 1990 (AVG)

M17 ASBESTOS CEILING SHEETS

YEAR	JAN	FEB	MAR	APR	MAY	JUN	JUL	AUG	SEP	OCT	NOV	DEC	AVG
1990	95.5	95.5	95.5	95.5	95.5	95.5	95.5	95.5	107.2	109.0	108.7	111.4	100.0
1991, 1992, 1993,, 2010, 2011, 2012, 2013, 2014, 2015, 2016													
2017	452.8	452.8	452.8	452.8	452.8	452.8	452.8	452.8	452.8	452.8	452.8	452.8	452.8
2018	452.8	452.8	452.8	452.8	452.8	452.8	452.8	452.8	452.8	456.6	459.8	459.8	454.3
2019	459.8	459.8	459.8	459.8	459.8	459.8	459.8	459.8	460.6	460.6	460.6	460.6	460.1
2020	460.6	460.6	460.6	460.6	460.6	460.6	460.6	460.6	460.6	460.6	460.6	460.6	460.6
2021	460.6	460.6											

M18 SANITARY WARE (Local)

YEAR	JAN	FEB	MAR	APR	MAY	JUN	JUL	AUG	SEP	OCT	NOV	DEC	AVG
1990	97.4	97.4	97.4	98.5	97.4	98.5	95.2	87.5	101.9	98.2	109.6	121.4	100.0
1991, 1992, 1993,, 2010, 2011, 2012, 2013, 2014, 2015, 2016													
2017	369.3	369.3	369.3	369.3	372.8	372.8	372.8	372.8	372.8	372.8	372.8	372.8	335.6
2018	372.8	372.8	372.8	372.8	372.8	372.8	372.8	372.8	372.8	372.8	372.8	372.8	335.6
2019	372.8	372.8	372.8	372.8	372.8	372.8	391.5	391.5	391.5	391.5	391.5	391.5	382.2
2020	391.5	391.5	391.5	391.5	391.5	391.5	409.7	409.7	409.7	409.7	409.7	409.7	400.6
2021	409.7	409.7											

M19 SANITARY WARE (Imported)

YEAR	JAN	FEB	MAR	APR	MAY	JUN	JUL	AUG	SEP	OCT	NOV	DEC	AVG
1990									95.3	103.6	98.2	102.9	100.0
1991, 1992, 1993,, 2010, 2011, 2012, 2013, 2014, 2015, 2016													
2017	569.1	569.1	569.1	569.1	569.1	569.1	590.6	590.6	590.6	590.6	590.6	590.6	579.8
2018	590.6	614.5	614.5	614.5	614.5	614.5	614.5	614.5	614.5	614.5	614.5	614.5	612.5
2019	614.5	614.5	614.5	614.5	614.5	614.5	625.5	625.5	625.5	625.5	625.5	625.5	620.0
2020	625.5	625.5	625.5	625.5	625.5	638.0	638.0	638.0	638.0	638.0	638.0	638.0	632.8
2021	638.0	638.0											

M20 PVC PIPES

YEAR	JAN	FEB	MAR	APR	MAY	JUN	JUL	AUG	SEP	OCT	NOV	DEC	AVG
1990	95.6	99.4	97.6	99.7	98.5	91.8	100.9	100.8	105.1	102.0	100.7	108.1	100.0
1991, 1992, 1993,, 2010, 2011, 2012, 2013, 2014, 2016													
2017	811.5	811.5	811.5	811.5	811.5	811.5	811.5	811.5	811.5	811.5	811.5	811.5	811.5
2018	836.8	836.8	836.8	836.8	859.7	859.7	859.7	859.7	859.7	859.7	859.7	859.7	852.1
2019	859.7	915.7	893.7	893.7	893.7	893.7	893.7	933.2	933.2	933.2	933.2	859.0	903.0
2020	859.0	859.0	859.0	859.0	859.0	859.0	859.0	859.0	859.0	859.0	859.0	1017.4	872.2
2021	1017.4	1017.4											

Table 1 Continues.....

Base Year - 1990 (AVG)

M21 FORMWORK TIMBER

YEAR	JAN	FEB	MAR	APR	MAY	JUN	JUL	AUG	SEP	OCT	NOV	DEC	AVG
1990	83.6	83.6	83.6	83.6	83.6	83.6	83.6	121.2	121.2	123.6	124.4	124.4	100.0
	1991, 1992, 1993,, 2010, 2011, 2012, 2013, 2014, 2015, 2016												
2017	996.3	996.3	996.3	996.3	996.3	996.3	1025.3	1025.3	1025.3	1025.3	1025.3	1046.3	1012.5
2018	1046.3	1046.3	1046.3	1046.3	1046.3	1046.3	1046.3	1084.2	1084.2	1084.2	1084.2	1084.2	1062.1
2019	1084.2	1084.2	1084.2	1084.2	1084.2	1084.2	1084.2	1084.2	1084.2	1084.2	1084.2	1084.2	1084.2
2020	1084.2	1084.2	1084.2	1084.2	1084.2	1145.1	1145.1	1145.1	1145.1	1145.1	1145.1	1145.1	1119.7
2021	1145.1	1145.1											

Note : Unit conversion printing error for Indices of Form work timber in February 1731.0 shall read as 1084.2

M22 GENERAL TIMBER

YEAR	JAN	FEB	MAR	APR	MAY	JUN	JUL	AUG	SEP	OCT	NOV	DEC	AVG
1990	77.3	77.3	77.3	77.3	77.3	113.4	114.4	114.4	114.5	117.5	117.2	122.2	100.0
	1991, 1992, 1993,, 2010, 2011, 2012, 2013, 2014, 2015, 2016												
2017	1047.4	1047.4	1063.0	1063.0	1063.0	1095.2	1095.2	1095.2	1095.2	1095.2	1104.1	1104.1	1080.7
2018	1104.1	1104.1	1104.1	1104.1	1104.1	1104.1	1104.1	1108.6	1108.6	1108.6	1108.6	1108.6	1106.0
2019	1108.6	1337.1	1337.1	1337.1	1337.1	1352.0	1352.0	1352.0	1352.0	1352.0	1352.0	1352.0	1326.8
2020	1352.0	1352.0	1352.0	1352.0	1352.0	1419.6	1419.6	1419.6	1419.6	1419.6	1419.6	1419.6	1391.4
2021	1419.6	1419.6											

M23 TIMBER PRODUCTS

YEAR	JAN	FEB	MAR	APR	MAY	JUN	JUL	AUG	SEP	OCT	NOV	DEC	AVG
1990	95.0	95.0	95.0	95.0	95.0	103.6	103.6	103.6	103.6	103.6	103.6	103.6	100.0
	1991, 1992, 1993,, 2011, 2012, 2013, 2014, 2015, 2016												
2017	546.2	546.2	546.2	546.2	546.2	562.4	562.4	562.4	562.4	562.4	562.4	589.9	558.0
2018	589.9	589.9	589.9	589.9	589.9	589.9	589.9	589.9	589.9	589.9	589.9	589.9	589.9
2019	589.9	601.0	601.0	601.0	601.0	601.0	601.0	601.0	601.0	601.0	601.0	601.0	600.1
2020	601.0	601.0	601.0	601.0	601.0	601.0	601.0	601.0	601.0	601.0	601.0	601.0	601.0
2021	601.0	601.0											

M24 GLASS

YEAR	JAN	FEB	MAR	APR	MAY	JUN	JUL	AUG	SEP	OCT	NOV	DEC	AVG
1990	98.3	98.3	99.2	99.2	97.4	95.6	96.5	97.2	107.5	102.2	104.0	104.4	100.0
	1991, 1992, 1993,, 2011, 2012, 2013, 2014, 2015, 2016												
2017	366.5	366.5	366.5	366.5	366.5	366.5	369.1	369.1	369.1	369.1	369.1	369.1	367.8
2018	369.1	369.1	379.8	379.8	379.8	379.8	379.8	379.8	379.8	379.8	379.8	379.8	378.0
2019	379.8	397.6	397.6	411.9	411.9	431.4	431.4	431.4	431.4	431.4	431.4	431.4	418.2
2020	431.4	431.4	431.4	431.4	431.4	431.4	431.4	457.8	457.8	457.8	457.8	457.8	442.4
2021	457.8	457.8											

Table 1 Continues.....

Base Year- 1990 (AVG)

M25 DOOR & WINDOW FITTINGS

YEAR	JAN	FEB	MAR	APR	MAY	JUN	JUL	AUG	SEP	OCT	NOV	DEC	AVG
1990	84.0	90.3	103.9	103.9	103.9	103.9	103.9	103.9	103.0	99.8	99.8	99.8	100.0
	1991 , 1992 . 1993 , ,2010 ,2011,2012,2013,2014 ,2015,2016												
2017	1032.8	1032.8	1032.8	1032.8	1032.8	1032.8	1032.8	1032.8	1051.7	1051.7	1051.7	1051.7	1039.1
2018	1051.7	1051.7	1051.7	1051.7	1051.7	1051.7	1051.7	1051.7	1051.7	1051.7	1051.7	1051.7	1051.7
2019	1051.7	1051.7	1051.7	1051.7	1051.7	1051.7	1051.7	1051.7	1051.7	1051.7	1051.7	1051.7	1051.7
2020	1051.7	1051.7	1051.7	1051.7	1051.7	1051.7	1051.7	1051.7	1051.7	1051.7	1051.7	1051.7	1051.7
2021	1051.7	1051.7											

M26 ELECTRICAL WIRES

YEAR	JAN	FEB	MAR	APR	MAY	JUN	JUL	AUG	SEP	OCT	NOV	DEC	AVG
1990	96.8	96.1	97.1	97.8	99.0	99.0	100.9	101.0	106.5	101.4	102.6	101.8	100.0
	1991 , 1992 . 1993 , ,2010 ,2011,2012,2013,2014 ,2015,2016												
2017	453.8	453.8	453.8	453.8	453.8	453.8	453.8	453.8	453.8	453.8	453.8	453.8	453.8
2018	453.8	478.6	478.6	478.6	478.6	478.6	478.6	511.5	511.5	511.5	511.5	511.5	490.2
2019	511.5	531.3	531.3	531.3	531.3	531.3	531.3	531.3	531.3	531.3	531.3	531.3	529.7
2020	531.3	531.3	531.3	531.3	531.3	531.3	531.3	531.3	531.3	531.3	531.3	585.8	535.9
2021	594.9	658.9											

M27 WALL PAINT

YEAR	JAN	FEB	MAR	APR	MAY	JUN	JUL	AUG	SEP	OCT	NOV	DEC	AVG
1990	85.4	85.4	85.4	91.5	94.5	98.4	104.3	104.4	111.0	111.0	114.2	114.8	100.0
	1991 , 1992 . 1993 , ,2010 ,2011,2012,2013,2014 ,2015,2016												
2017	721.9	721.9	721.9	721.9	721.9	721.9	721.9	721.9	721.9	721.9	779.3	779.3	731.4
2018	779.3	779.3	779.3	779.3	779.3	779.3	779.3	779.3	779.3	779.3	779.3	779.3	779.3
2019	779.3	901.2	901.2	901.2	901.2	907.0	907.0	907.0	907.0	928.4	928.4	928.4	899.7
2020	928.4	928.4	1021.8	1021.8	1021.8	1021.8	1021.8	1021.8	1021.8	1021.8	1021.8	1021.8	1006.3
2021	1021.8	1021.8											

M28 WOOD PAINT

YEAR	JAN	FEB	MAR	APR	MAY	JUN	JUL	AUG	SEP	OCT	NOV	DEC	AVG
1990	85.4	85.4	85.4	91.5	94.5	98.4	104.3	104.4	111.0	111.0	114.2	114.8	100.0
	1991 , 1992 . 1993 , ,2010 ,2011,2012,2013,2014 ,2015,2016												
2017	711.8	711.8	711.8	711.8	711.8	711.8	711.8	711.8	711.8	711.8	744.6	744.6	717.2
2018	744.6	744.6	744.6	744.6	744.6	744.6	744.6	744.6	744.6	744.6	744.6	744.6	744.6
2019	744.6	783.1	783.1	783.1	783.1	791.4	791.4	791.4	791.4	802.3	802.3	802.3	787.4
2020	802.3	802.3	802.3	802.3	802.3	802.3	802.3	802.3	802.3	802.3	802.3	802.3	802.3
2021	802.3	802.3											

M29 CADJAN

YEAR	JAN	FEB	MAR	APR	MAY	JUN	JUL	AUG	SEP	OCT	NOV	DEC	AVG
1990	83.5	85.3	85.3	81.7	81.7	82.6	88.8	88.0	123.3	134.6	133.3	131.9	100.0
	1991, 1992, 1993,, 2010, 2011, 2012, 2013, 2014, 2015, 2016												
2017	1066.1	1066.1	1066.1	1066.1	1066.1	1066.1	1066.1	1066.1	1066.1	1066.1	1066.1	1066.1	1066.1
2018	1066.1	1066.1	1066.1	1066.1	1066.1	1066.1	1066.1	1066.1	1066.1	1066.1	1066.1	1066.1	1066.1
2019	1066.1	1066.1	1066.1	1066.1	1066.1	1066.1	1066.1	1066.1	1066.1	1066.1	1066.1	1066.1	1066.1
2020	1066.1	1066.1	1066.1	1066.1	1066.1	1066.1	1066.1	1066.1	1066.1	1066.1	1066.1	1066.1	1066.1
2021	1066.1	1066.1											

M30 BITUMEN 80/100 (Drum Form)

YEAR	JAN	FEB	MAR	APR	MAY	JUN	JUL	AUG	SEP	OCT	NOV	DEC	AVG
1990	92.0	92.0	92.0	92.0	92.0	92.0	92.0	105.6	105.6	105.6	119.7	119.7	100.0
	1991, 1992, 1993,, 2010, 2011, 2012, 2013, 2014, 2015, 2016												
2017	598.6	598.6	598.6	598.6	598.6	598.6	598.6	598.6	598.6	598.6	598.6	598.6	598.6
2018	598.6	598.6	598.6	598.6	598.6	598.6	598.6	598.6	775.2	907.0	936.1	936.1	695.3
2019	936.1	956.6	956.6	936.1	936.1	936.1	936.1	936.1	936.1	936.1	936.1	936.1	939.5
2020	936.1	936.1	936.1	936.1	936.1	936.1	936.1	936.1	936.1	936.1	936.1	936.1	936.1
2021	936.1	936.1											

Base Month - January 2001

M30A BITUMEN 80/100 (Bulk Form)

YEAR	JAN	FEB	MAR	APR	MAY	JUN	JUL	AUG	SEP	OCT	NOV	DEC	AVG
2001	100.0	100.0	100.0	100.0	100.0	100.0	100.0	100.0	100.0	100.0	100.0	100.0	100.0
	2002, 2003,, 2010, 2011, 2012, 2013, 2014, 2015, 2016												
2017	386.2	386.2	386.2	386.2	386.2	386.2	386.2	386.2	386.2	386.2	386.2	386.2	386.2
2018	386.2	386.2	386.2	386.2	386.2	386.2	386.2	386.2	391.1	408.5	414.7	414.7	393.2
2019	414.7	410.1	410.1	407.6	407.6	395.2	395.2	395.2	395.2	397.4	397.4	397.4	401.9
2020	397.4	397.4	374.8	362.4	362.4	362.4	328.0	328.0	328.0	328.0	328.0	357.0	354.5
2021	399.7	473.5											

Base Month - January 2001

M30B BITUMEN 60/70 (Drum Form)

YEAR	JAN	FEB	MAR	APR	MAY	JUN	JUL	AUG	SEP	OCT	NOV	DEC	AVG
2001	100.0	100.0	100.0	100.0	100.0	100.0	100.0	100.0	100.0	100.0	100.0	100.0	100.0
	2002, 2003,, 2010, 2011, 2012, 2013, 2014, 2015, 2016												
2017	225.2	225.2	225.2	225.2	225.2	225.2	225.2	252.3	252.3	252.3	252.3	252.3	236.5
2018	252.3	252.3	252.3	252.3	252.3	252.3	297.3	297.3	320.8	375.4	387.4	387.4	298.3
2019	387.4	395.9	395.9	387.4	387.4	387.4	387.4	387.4	387.4	387.4	387.4	387.4	388.8
2020	387.4	387.4	387.4	387.4	387.4	387.4	387.4	387.4	387.4	387.4	387.4	387.4	387.4
2021	387.4	387.4											

Base Month - January 2001

M30C BITUMEN 60/70 (Bulk Form)

YEAR	JAN	FEB	MAR	APR	MAY	JUN	JUL	AUG	SEP	OCT	NOV	DEC	AVG
2001	100.0	100.0	100.0	100.0	100.0	100.0	100.0	100.0	100.0	100.0	100.0	100.0	100.0
	2002, 2003,, 2010, 2011, 2012, 2013, 2014, 2015, 2016												
2017	353.5	353.5	353.5	353.5	353.5	353.5	353.5	353.5	353.5	353.5	353.5	353.5	353.5
2018	378.8	378.8	378.8	378.8	378.8	378.8	378.8	378.8	382.8	399.3	405.3	405.3	385.3
2019	405.3	429.3	429.3	398.7	398.7	377.3	377.3	377.3	377.3	379.3	379.3	379.3	392.4
2020	379.3	379.3	357.7	346.0	346.0	346.0	313.1	313.1	313.1	313.1	313.1	340.8	338.4
2021	381.5	452.0											

Note : Indices of M30A, M30B, & M30C were introduced from October 2006 and back dated to January 2001.

Weighted average price has been used for 30A & M30C from September 2007 .

Table 1 Continues.....

Base Month - April 1993

M31 TERRAZZO

YEAR	JAN	FEB	MAR	APR	MAY	JUN	JUL	AUG	SEP	OCT	NOV	DEC	AVG
1993	~~~	~~~	~~~	100.0	99.3	113.3	113.3	113.3	117.3	120.6	120.6	120.6	113.1
	1994 , 1995 ,1996 ,2010 ,2011,2012,2013,2014 ,2015,2016												
2016	807.4	842.6	842.6	842.6	842.6	877.7	877.7	877.7	877.7	877.7	877.7	877.7	860.1
2017	877.7	891.5	891.5	891.5	891.5	891.5	891.5	891.5	950.8	950.8	950.8	950.8	910.1
2018	950.8	950.8	987.8	987.8	987.8	987.8	987.8	987.8	987.8	987.8	987.8	987.8	981.6
2019	987.8	991.9	991.9	991.9	991.9	991.9	991.9	991.9	991.9	991.9	991.9	991.9	991.6
2020	991.9	991.9	991.9	991.9	991.9	991.9	991.9	991.9	991.9	991.9	991.9	991.9	991.9
2021	991.9	991.9											

M32 FLOOR TILES

YEAR	JAN	FEB	MAR	APR	MAY	JUN	JUL	AUG	SEP	OCT	NOV	DEC	AVG
1993	~~~	~~~	~~~	100.0	100.0	100.0	109.8	109.8	109.8	109.8	109.8	109.8	106.5
	1994 , 1995,1996 ,2010 ,2011,2012,2013,2014,2015,2016												
2017	251.1	251.1	251.1	251.1	251.1	251.1	251.1	251.1	251.1	251.1	251.1	251.1	251.1
2018	251.1	251.1	251.1	251.1	255.1	255.1	255.1	255.1	255.1	255.1	255.1	255.1	253.8
2019	255.1	255.1	255.1	255.1	255.1	255.1	259.5	259.5	259.5	259.5	259.5	259.5	257.3
2020	259.5	259.5	259.5	259.5	259.5	259.5	259.5	259.5	259.5	259.5	259.5	259.5	259.5
2021	259.5	259.5											

M33 WALL TILES

YEAR	JAN	FEB	MAR	APR	MAY	JUN	JUL	AUG	SEP	OCT	NOV	DEC	AVG
1993	~~~	~~~	~~~	100.0	100.0	100.0	100.0	100.0	100.0	100.0	100.0	100.0	100.0
	1994 , 1995 ,1996 ,2010 ,2011,2012,2013,2014 ,2015,2016												
2017	944.8	944.8	944.8	944.8	944.8	944.8	944.8	944.8	944.8	944.8	944.8	944.8	944.8
2018	944.8	944.8	944.8	944.8	961.4	961.4	961.4	961.4	961.4	961.4	961.4	961.4	955.9
2019	961.4	1246.2	1246.2	1246.2	1246.2	1246.2	1273.1	1273.1	1273.1	1273.1	1273.1	1273.1	1235.9
2020	1273.1	1273.1	1273.1	1273.1	1273.1	1273.1	1273.1	1273.1	1273.1	1273.1	1273.1	1273.1	1273.1
2021	1273.1	1273.1											

M34 GRANITE TILES

YEAR	JAN	FEB	MAR	APR	MAY	JUN	JUL	AUG	SEP	OCT	NOV	DEC	AVG
1993	~~~	~~~	~~~	100.0	100.8	101.3	101.8	102.4	100.3	100.3	100.3	100.8	100.9
	1994 , 1995 . 1996 , ,2010 ,2011,2012,2013,2014,2015,2016												
2017	629.9	629.9	629.9	629.9	629.9	629.9	629.9	629.9	629.9	661.2	661.2	661.2	637.7
2018	661.2	661.2	661.2	661.2	695.4	695.4	695.4	695.4	695.4	695.4	695.4	695.4	684.0
2019	695.4	695.4	695.4	695.4	695.4	695.4	695.4	695.4	695.4	695.4	695.4	695.4	695.4
2020	695.4	695.4	695.4	695.4	695.4	695.4	695.4	695.4	695.4	695.4	695.4	695.4	695.4
2021	695.4	695.4											

Table 1 Continues.....

Base Month - April 1993

M35 COLOUR PIGMENT

YEAR	JAN	FEB	MAR	APR	MAY	JUN	JUL	AUG	SEP	OCT	NOV	DEC	AVG
1993	~~~	~~~	~~~	100.0	100.0	97.7	109.9	110.6	105.3	105.3	106.8	108.3	104.9
				1994 , 1995 . 1996 , ,2010 ,2011,2012,2013,2014,2015,2016									
2017	330.4	330.4	330.4	330.4	330.4	330.4	330.4	330.4	330.4	330.4	330.4	330.4	330.4
2018	330.4	347.8	347.8	347.8	347.8	347.8	347.8	347.8	347.8	347.8	347.8	347.8	346.3
2019	347.8	347.8	347.8	347.8	347.8	347.8	347.8	347.8	347.8	347.8	347.8	347.8	347.8
2020	347.8	347.8	347.8	347.8	347.8	347.8	347.8	347.8	347.8	347.8	347.8	347.8	347.8
2021	347.8	347.8											

M36 ALUMINIUM DOORS WINDOWS & PARTITIONS

YEAR	JAN	FEB	MAR	APR	MAY	JUN	JUL	AUG	SEP	OCT	NOV	DEC	AVG
1993	~~~	~~~	~~~	100.0	100.0	100.0	100.0	100.0	100.0	100.0	100.1	100.1	100.0
				1994 , 1995 . 1996 , ,2010 ,2011,2012,2013,2014,2015,2016									
2017	676.1	696.9	696.9	696.9	696.9	696.9	696.9	696.9	696.9	696.9	696.9	696.9	695.1
2018	721.9	721.9	721.9	721.9	721.9	721.9	721.9	749.2	749.2	749.2	749.2	749.2	733.3
2019	749.2	749.2	749.2	749.2	749.2	749.2	780.1	780.1	780.1	780.1	780.1	780.1	764.7
2020	780.1	780.1	780.1	780.1	780.1	858.1	858.1	858.1	858.1	858.1	858.1	858.1	825.6
2021	858.1	858.1											

M37 ALUMINIUM SUSPENDED CEILING

YEAR	JAN	FEB	MAR	APR	MAY	JUN	JUL	AUG	SEP	OCT	NOV	DEC	AVG
1993	~~~	~~~	~~~	100.0	100.0	100.0	100.0	100.0	100.0	100.0	100.0	100.0	100.0
				1994 , 1995 . 1996 , ,2010,2011,2012,2013,2014 ,2015,2016									
2017	507.4	530.9	530.9	530.9	530.9	530.9	530.9	530.9	530.9	530.9	530.9	530.9	529.0
2018	558.2	558.2	558.2	558.2	558.2	558.2	558.2	579.2	579.2	579.2	579.2	579.2	566.9
2019	579.2	579.2	579.2	579.2	579.2	579.2	652.9	652.9	652.9	652.9	652.9	652.9	616.1
2020	652.9	652.9	652.9	652.9	652.9	718.2	718.2	718.2	718.2	718.2	718.2	718.2	691.0
2021	718.2	718.2											

M38 ELECTRICAL FITTINGS

YEAR	JAN	FEB	MAR	APR	MAY	JUN	JUL	AUG	SEP	OCT	NOV	DEC	AVG
1993	~~~	~~~	~~~	100.0	100.0	100.5	103.4	104.5	103.3	103.3	103.4	103.4	102.3
				1994 , 1995 . 1996 , ,2010,2011,2012,2013,2014,2015,2016									
2017	231.2	231.2	242.7	242.7	242.7	242.7	242.7	242.7	242.7	242.7	242.7	242.7	240.8
2018	242.7	244.7	244.7	244.7	244.7	244.7	244.7	244.7	244.7	244.7	244.7	244.7	244.5
2019	244.7	244.7	251.1	251.1	251.1	251.1	251.1	251.1	251.1	251.1	251.1	251.1	250.1
2020	251.1	251.1	251.1	251.1	263.7	263.7	263.7	263.7	263.7	263.7	263.7	263.7	259.5
2021	263.7	263.7											

Table 1 Continues.....

Base Month - April 1993

M39 READY MIXED CONCRETE

YEAR	JAN	FEB	MAR	APR	MAY	JUN	JUL	AUG	SEP	OCT	NOV	DEC	AVG
1993	---	---	---	100.0	100.5	102.6	102.6	108.4	108.4	111.0	108.4	108.4	105.6
1994 , 1995 . 1996 , ,2010,2011,2012,2013,2014,2015,2016													
2017	437.3	437.3	440.0	440.0	440.0	440.0	440.0	440.0	440.0	440.0	440.0	440.0	439.6
2018	440.6	440.6	440.6	440.6	440.6	440.6	443.3	446.6	446.6	446.6	446.6	446.6	443.3
2019	446.6	461.3	461.3	464.9	464.9	464.9	464.9	464.9	464.9	464.9	464.9	464.9	462.7
2020	464.9	464.9	464.9	464.9	464.9	464.9	464.9	464.9	464.9	464.9	464.9	464.9	464.9
2021	464.9	464.9											

M40 HIGH TENSILE STEEL WIRE

YEAR	JAN	FEB	MAR	APR	MAY	JUN	JUL	AUG	SEP	OCT	NOV	DEC	AVG
1993	---	---	---	100.0	100.0	100.0	100.0	100.0	100.0	105.1	105.1	105.1	101.7
1994 , 1995 . 1996 , ,2010,2011,2012,2013,2014,2015,2016													
2016	632.4	632.4	632.4	632.4	632.4	632.4	632.4	632.4	632.4	632.4	632.4	632.4	632.4
2017	632.4	632.4	632.4	632.4	632.4	632.4	632.4	632.4	632.4	632.4	632.4	632.4	632.4
2018	632.4	632.4	632.4	632.4	632.4	632.4	632.4	632.4	651.8	651.8	651.8	651.8	638.8
2019	651.8	855.1	855.1	855.1	855.1	855.1	855.1	855.1	855.1	855.1	855.1	844.5	837.3
2020	844.5	844.5	844.5	844.5	844.5	869.8	893.5	908.0	911.5	911.5	911.5	911.5	878.3
2021	911.5	911.5											

M41 PRE-STRESSED BRIDGE BEAMS

YEAR	JAN	FEB	MAR	APR	MAY	JUN	JUL	AUG	SEP	OCT	NOV	DEC	AVG
1993	---	---	---	100.0	100.0	100.0	105.3	105.3	105.3	105.3	105.3	105.3	103.6
1994 , 1995 . 1996 , ,2010,2011,2012,2013,2014,2015,2016													
2017	967.1	967.1	967.1	967.1	967.1	967.1	967.1	967.1	967.1	967.1	967.1	967.1	967.1
2018	967.1	967.1	967.1	967.1	967.1	967.1	967.1	967.1	983.1	983.1	983.1	983.1	972.4
2019	983.1	1226.6	1226.6	1226.6	1226.6	1226.6	1226.6	1226.6	1226.6	1226.6	1226.6	1202.5	1204.3
2020	1202.5	1202.5	1202.5	1202.5	1202.5	1233.5	1262.6	1270.9	1272.8	1272.8	1272.8	1272.8	1239.2
2021	1272.8	1272.8											

M42 CONCRETE LAMP POST (Pre-Stressed)

YEAR	JAN	FEB	MAR	APR	MAY	JUN	JUL	AUG	SEP	OCT	NOV	DEC	AVG
1993	---	---	---	100.0	100.0	100.0	100.0	101.7	101.7	101.7	101.7	101.7	100.9
1994 , 1995 . 1996 , ,2010,2011,2012,2013,2014,2015,2016													
2017	733.5	733.5	733.5	733.5	733.5	733.5	733.5	733.5	733.5	733.5	733.5	733.5	733.5
2018	733.5	733.5	733.5	733.5	733.5	733.5	733.5	733.5	805.0	805.0	805.0	805.0	757.3
2019	805.0	953.2	953.2	953.2	953.2	953.2	953.2	953.2	953.2	953.2	953.2	934.5	939.3
2020	934.5	934.5	934.5	934.5	934.5	954.1	972.4	980.1	981.9	981.9	981.9	981.9	958.9
2021	981.9	981.9											

Note : M40 ,M41 & M42 of July 2020 publications are incorrect,So please use the correct table here

Table 1 Continues.....

Base Month - April 1993

M43 PRECAST CONCRETE COMPONENTS FOR BRIDGES,ROADS & BUILDING

YEAR	JAN	FEB	MAR	APR	MAY	JUN	JUL	AUG	SEP	OCT	NOV	DEC	AVG
1993	~~~	~~~	~~~	100.0	100.0	100.0	108.7	108.7	108.7	108.7	108.7	108.7	105.8
1994 , 1995 . 1996 , ,2010 ,2011,2012,2013,2014,2015,2016													
2016	498.4	498.4	498.4	498.4	498.4	498.4	498.4	498.4	498.4	498.4	498.4	498.4	498.4
2017	498.4	498.4	498.4	498.4	498.4	498.4	498.4	498.4	498.4	498.4	498.4	498.4	498.4
2018	498.4	498.4	498.4	498.4	498.4	498.4	498.4	498.4	511.8	511.8	511.8	511.8	502.9
2019	511.8	504.7	504.7	504.7	504.7	504.7	504.7	504.7	504.7	504.7	504.7	501.4	505.0
2020	501.4	501.4	501.4	501.4	501.4	522.4	542.1	544.3	544.9	544.9	544.9	544.9	524.6
2021	544.9	544.9											

M44 HUME PIPES

YEAR	JAN	FEB	MAR	APR	MAY	JUN	JUL	AUG	SEP	OCT	NOV	DEC	AVG
1993	~~~	~~~	~~~	100.0	100.0	100.0	104.3	104.3	104.3	104.3	104.3	104.3	102.9
1994 , 1995 . 1996 , ,2010,2011,2012,2013,2014,2015,2016													
2017	590.4	590.4	590.4	590.4	590.4	590.4	590.4	590.4	590.4	590.4	590.4	590.4	590.4
2018	590.4	590.4	590.4	590.4	590.4	590.4	590.4	590.4	596.8	596.8	596.8	596.8	592.5
2019	596.8	596.8	596.8	596.8	596.8	596.8	596.8	596.8	596.8	596.8	596.8	585.0	595.8
2020	585.0	585.0	585.0	585.0	585.0	608.0	629.5	642.3	645.4	645.4	645.4	645.4	615.5
2021	645.4	645.4											

Base Month - January 1996

M45 EARTH

YEAR	JAN	FEB	MAR	APR	MAY	JUN	JUL	AUG	SEP	OCT	NOV	DEC	AVG
1996	100.0	100.0	100.0	100.0	100.0	100.0	100.0	100.0	100.0	100.0	106.7	106.7	101.1
1997 , 1998 ,1999 , ,2010,2011,2012,2013,2014 ,2015,2016													
2017	1042.7	1042.7	1042.7	1042.7	1109.3	1109.3	1109.3	1138.7	1138.7	1160.0	1160.0	1160.0	1104.7
2018	1160.0	1173.3	1173.3	1173.3	1200.0	1200.0	1235.2	1235.2	1235.2	1259.2	1259.2	1286.9	1215.9
2019	1286.9	1286.9	1286.9	1286.9	1286.9	1286.9	1286.9	1286.9	1286.9	1286.9	1286.9	1286.9	1286.9
2020	1286.9	1286.9	1286.9	1286.9	1286.9	1286.9	1286.9	1286.9	1333.3	1333.3	1333.3	1333.3	1302.4
2021	1333.3	1333.3											

Base Month - January 2001

M46 ZINK ALUMINIUM SHEETS

YEAR	JAN	FEB	MAR	APR	MAY	JUN	JUL	AUG	SEP	OCT	NOV	DEC	AVG
2001	100.0	100.0	100.0	100.0	100.0	100.0	100.0	100.0	100.0	102.6	102.6	102.6	100.7
2002,2003,2004 , ,2010,2011,2012,2013,2014,2015,2016													
2017	174.2	180.0	180.0	180.0	180.0	180.0	187.3	187.3	187.3	187.3	187.3	187.3	183.2
2018	190.2	190.2	190.2	190.2	190.2	190.2	190.2	194.8	194.8	194.8	194.8	194.8	192.1
2019	194.8	181.1	181.1	186.5	186.5	186.5	186.5	186.5	186.5	186.5	186.5	186.5	186.3
2020	186.5	186.5	186.5	186.5	190.0	190.0	190.0	190.0	190.0	190.0	190.0	190.0	188.9
2021	202.8	212.9											

Table 1 Continues.....

Base Month- May 2006

M47 DUCTILE IRON PIPE

YEAR	JAN	FEB	MAR	APR	MAY	JUN	JUL	AUG	SEP	OCT	NOV	DEC	AVG
2006	~~~	~~~	~~~	~~~	100.0	101.0	101.1	101.1	101.1	107.9	110.1	110.3	104.1
				2007, 2008,.... ,2010,2011,2012,2013,2014,2015,2016									
2017	235.8	235.8	235.8	235.8	235.8	235.8	241.4	241.4	241.4	241.4	241.4	241.4	238.6
2018	241.4	241.4	241.4	241.4	241.4	241.4	241.4	241.4	241.4	271.7	271.7	271.7	249.0
2019	271.7	271.7	271.7	271.7	271.7	271.7	271.7	271.7	271.7	271.7	271.7	289.3	273.1
2020	309.1	309.1	309.1	309.1	309.1	316.7	316.7	316.7	316.7	316.7	316.7	316.7	313.5
2021	316.7	316.7											

Base Month- January 2000

M48 AGGREGATE BASE COURSE (ABC)

YEAR	JAN	FEB	MAR	APR	MAY	JUN	JUL	AUG	SEP	OCT	NOV	DEC	AVG
2000	77.5	77.6	78.0	78.2	78.4	78.3	78.5	78.5	78.6	78.3	78.6	78.9	80.2
				2001,2002 ,2010,2011,2012,2013,2014,2015 ,2016									
2017	190.2	190.2	190.2	190.2	193.4	193.4	193.4	193.4	195.7	195.7	195.7	195.7	193.1
2018	199.0	199.0	199.0	199.0	200.9	200.9	200.9	200.9	200.9	200.9	200.9	200.9	200.3
2019	200.9	200.9	231.4	231.4	231.4	231.4	231.4	231.4	231.4	231.4	231.4	231.4	226.3
2020	231.4	231.4	231.4	231.4	219.9	219.9	219.9	219.9	219.9	219.9	219.9	219.9	223.7
2021	219.9	241.2											

Base Month - April 2007

M49 CHAIN LINK

YEAR	JAN	FEB	MAR	APR	MAY	JUN	JUL	AUG	SEP	OCT	NOV	DEC	AVG
2007	~~~	~~~	~~~	100.0	100.0	100.0	100.0	100.0	109.5	109.7	110.6	111.3	104.6
				2008, 2009, 2010,2011 ,2012,2013,2014,2015,2016									
2017	239.0	239.0	239.0	239.0	239.0	240.9	240.9	240.9	240.9	240.9	240.9	240.9	240.1
2018	240.9	240.9	242.5	242.5	242.5	242.5	242.5	242.5	242.5	242.5	242.5	242.5	242.2
2019	242.5	269.2	269.2	269.2	269.2	269.2	269.2	269.2	269.2	269.2	269.2	269.2	267.0
2020	269.2	269.2	269.2	269.2	269.2	269.2	269.2	269.2	269.2	269.2	269.2	269.2	269.2
2021	299.9	299.9											

Base Month - September 2007

M50 STAINLESS STEEL

YEAR	JAN	FEB	MAR	APR	MAY	JUN	JUL	AUG	SEP	OCT	NOV	DEC	AVG
2007	~~~	~~~	~~~	~~~	~~~	~~~	~~~	~~~	100.0	100.0	100.0	100.0	100.0
				2008 ,2009 ,2010,2011,2012,2013,2014,2015,2016									
2017	172.9	172.9	172.9	172.9	172.9	172.9	172.9	172.9	172.9	172.9	172.9	178.5	173.4
2018	178.5	178.5	178.5	178.5	178.5	178.5	178.5	178.5	178.5	178.5	178.5	178.5	178.5
2019	178.5	178.5	178.5	178.5	178.5	178.5	178.5	187.0	187.0	187.0	187.0	187.0	182.0
2020	187.0	187.0	187.0	187.0	187.0	189.2	189.2	189.2	189.2	189.2	189.2	189.2	188.3
2021	189.2	189.2											

Base Month - June 2007

M51 CEMENT ROOF TILES

YEAR	JAN	FEB	MAR	APR	MAY	JUN	JUL	AUG	SEP	OCT	NOV	DEC	AVG
2007	~~~	~~~	~~~	~~~	~~~	100.0	100.0	100.0	100.0	100.0	100.0	106.9	101.0
				2008 , 2009 ,2010,2011,2012,2013,2014,2015,2016									
2017	148.7	148.7	148.7	148.7	148.7	148.7	148.7	148.7	148.7	148.7	148.7	148.7	148.7
2018	148.7	148.7	148.7	148.7	148.7	148.7	148.7	148.7	148.7	148.7	148.7	148.7	148.7
2019	148.7	160.6	160.6	160.6	160.6	160.6	160.6	160.6	160.6	160.6	160.6	160.6	159.6
2020	160.6	160.6	160.6	160.6	160.6	160.6	160.6	160.6	160.6	160.6	160.6	160.6	160.6
2021	160.6	160.6											

Table 1 Continues.....

Base Month- January 2009

M52 QUARRY DUST

YEAR	JAN	FEB	MAR	APR	MAY	JUN	JUL	AUG	SEP	OCT	NOV	DEC	AVG
2009	100.0	101.2	101.2	101.2	102.0	102.4	104.1	105.7	105.7	106.1	106.9	106.9	103.6
			2010, 2011,2012,2013,2014,2015,2016										
2017	163.3	163.3	163.3	163.3	166.1	166.1	166.1	166.1	168.6	168.6	168.6	168.6	166.0
2018	171.4	171.4	171.4	171.4	172.7	172.7	177.1	177.1	177.1	177.1	177.1	177.1	174.5
2019	177.1	177.1	177.1	177.1	177.1	177.1	177.1	177.1	177.1	177.1	177.1	177.1	177.1
2020	177.1	177.1	177.1	177.1	177.1	177.1	177.1	177.1	177.1	177.1	177.1	177.1	177.1
2021	177.1	193.5											

Base Month - May 2011

M53 GABION BOX

YEAR	JAN	FEB	MAR	APR	MAY	JUN	JUL	AUG	SEP	OCT	NOV	DEC	AVG
2011					100.0	100.0	100.0	100.0	100.0	100.0	100.0	100.0	100.0
			2010, 2011,2012,2013,2014,2015,2016										
2017	103.7	103.7	103.7	103.7	103.7	103.7	103.7	103.7	103.7	103.7	103.7	103.7	103.7
2018	103.7	107.5	113.5	113.5	113.5	113.5	113.5	113.5	113.5	113.5	113.5	113.5	112.2
2019	113.5	113.5	113.5	113.5	113.5	113.5	113.5	113.5	113.5	113.5	113.5	113.5	113.5
2020	113.5	113.5	113.5	113.5	126.1	126.1	126.1	126.1	126.1	126.1	126.1	126.1	121.9
2021	131.3	131.3											

Note : Indices of M53-Gabion Box are introduced in October 2011 and back dated to May 2011.

Base Month - January 2012

M54 GEO TEXTILE

YEAR	JAN	FEB	MAR	APR	MAY	JUN	JUL	AUG	SEP	OCT	NOV	DEC	AVG
2011	---	---	---	---	---	---	---	---	---	---	---	---	---
			2011, 2012,2013,2014 ,2015,2016										
2017	100.0	100.0	100.0	100.0	100.0	100.0	100.0	100.0	100.0	100.0	100.0	100.0	100.0
2018	100.0	100.0	100.0	100.0	100.0	100.0	100.0	100.0	100.0	100.0	100.0	100.0	100.0
2019	110.6	117.5	117.5	117.5	117.5	117.5	117.5	117.5	117.5	117.5	117.5	117.5	116.9
2020	117.5	117.5	117.5	117.5	117.5	117.5	117.5	117.5	117.5	117.5	127.0	127.0	119.0
2021	127.0	127.0											

Note : Indices of M54-Geo Textile are introduced in October 2011 and back dated to May 2011.

Base Month - January 2014

M55 ROAD MARKING PAINT

YEAR	JAN	FEB	MAR	APR	MAY	JUN	JUL	AUG	SEP	OCT	NOV	DEC	AVG
2015	100.0	100.0	100.0	100.0	100.0	100.0	100.0	100.0	100.0	100.0	100.0	100.0	100.0
2017	100.0	100.0	100.0	100.0	100.0	100.0	100.0	100.0	100.0	100.0	100.0	100.0	100.0
2018	100.0	100.0	100.0	100.0	100.0	100.0	121.5	121.5	121.5	121.5	121.5	121.5	110.8
2019	121.5	122.5	122.5	122.5	122.5	122.5	122.5	122.5	122.5	122.5	122.5	122.5	122.4
2020	121.5	121.5	121.5	121.5	121.5	121.5	121.5	121.5	121.5	121.5	121.5	121.5	121.5
2021	121.5	121.5											

TABLE 2 : PRICE INDICES FOR LABOUR WAGES

Base Year - 1990 (AVG)

L1 SKILLED LABOUR

YEAR	JAN	FEB	MAR	APR	MAY	JUN	JUL	AUG	SEP	OCT	NOV	DEC	AVG
1990	96.0	96.0	96.0	96.0	96.0	96.0	103.0	103.0	103.0	105.0	105.0	105.0	100.0
	1991, 1992 . 1993 , ,2010,2011,2012,2013,2014,2015,2016												
2017	502.6	502.6	505.2	505.2	505.2	505.2	505.2	505.2	505.2	505.2	505.2	505.2	504.8
2018	505.2	511.5	511.5	511.5	511.5	511.5	511.5	511.5	511.5	511.5	511.5	511.5	511.0
2019	511.5	511.5	511.5	511.5	511.5	511.5	511.5	511.5	511.5	511.5	511.5	560.3	515.6
2020	560.3	560.3	560.3	560.3	560.3	560.3	560.3	560.3	560.3	560.3	560.3	560.3	560.3
2021	560.3	560.3											

L2 SEMISKILLED LABOUR

YEAR	JAN	FEB	MAR	APR	MAY	JUN	JUL	AUG	SEP	OCT	NOV	DEC	AVG
1990	100.0	100.0	100.0	100.0	100.0	100.0	100.0	100.0	100.0	100.0	100.0	100.0	100.0
	1991, 1992 . 1993 , ,2010,2011,2012,2013,2014,2015,2016												
2017	528.8	528.8	528.8	528.8	528.8	528.8	528.8	528.8	528.8	528.8	528.8	528.8	528.8
2018	528.8	528.8	528.8	528.8	528.8	528.8	528.8	528.8	528.8	528.8	528.8	528.8	528.8
2019	528.8	528.8	528.8	528.8	528.8	528.8	528.8	528.8	528.8	528.8	528.8	608.0	535.4
2020	608.0	608.0	608.0	608.0	608.0	608.0	608.0	608.0	608.0	608.0	608.0	608.0	608.0
2021	608.0	608.0											

L3 UNSKILLED LABOUR

YEAR	JAN	FEB	MAR	APR	MAY	JUN	JUL	AUG	SEP	OCT	NOV	DEC	AVG
1990	95.7	95.7	95.7	95.7	95.7	95.7	103.1	103.1	103.1	103.1	103.1	110.4	100.0
	1991, 1992 . 1993 , ,2010,2011,2012,2013,2014,2015,2016												
2017	572.4	572.4	598.5	598.5	598.5	598.5	598.5	598.5	598.5	598.5	598.5	598.5	594.1
2018	598.5	611.6	611.6	611.6	611.6	611.6	611.6	611.6	611.6	611.6	611.6	611.6	610.5
2019	611.6	611.6	611.6	611.6	611.6	611.6	611.6	611.6	611.6	611.6	611.6	690.8	618.2
2020	690.8	690.8	690.8	690.8	690.8	690.8	690.8	690.8	690.8	690.8	690.8	690.8	690.8
2021	690.8	690.8											

TABLE 3: PRICE INDICES FOR DRY HIRE RATES FOR PLANTS AND EQUIPMENTS

Base Year - 1990 (AVG)

P1 SMALL EQUIPMENT

YEAR	JAN	FEB	MAR	APR	MAY	JUN	JUL	AUG	SEP	OCT	NOV	DEC	AVG
1990	100.0	100.0	100.0	100.0	100.0	100.0	100.0	100.0	100.0	100.0	100.0	100.0	100.0
	1991, 1992, 1993, ,2010,2011,2012,2013,2014,2015,2016												
2017	400.8	400.8	400.8	445.0	445.0	445.0	445.0	445.0	445.0	445.0	445.0	445.0	433.9
2018	445.0	445.0	445.0	445.0	445.0	445.0	445.0	445.0	445.0	471.2	471.2	471.2	451.5
2019	471.2	471.2	471.2	471.2	471.2	471.2	471.2	471.2	471.2	471.2	471.2	471.2	471.2
2020	471.2	471.2	471.2	471.2	471.2	471.2	471.2	471.2	471.2	471.2	471.2	471.2	471.2
2021	471.2	471.2											

P2 HEAVY EQUIPMENT

YEAR	JAN	FEB	MAR	APR	MAY	JUN	JUL	AUG	SEP	OCT	NOV	DEC	AVG
1990	100.0	100.0	100.0	100.0	100.0	100.0	100.0	100.0	100.0	100.0	100.0	100.0	100.0
	1991, 1992, 1993, ,2011,2012,2013,2014,2015,2016												
2017	346.4	346.4	346.4	375.0	375.0	375.0	375.0	375.0	375.0	375.0	375.0	375.0	367.8
2018	375.0	375.0	375.0	375.0	375.0	375.0	375.0	375.0	375.0	398.3	398.3	398.3	380.8
2019	398.3	398.3	398.3	398.3	398.3	398.3	398.3	398.3	398.3	398.3	398.3	398.3	398.3
2020	398.3	398.3	398.3	398.3	398.3	398.3	398.3	398.3	398.3	398.3	398.3	398.3	398.3
2021	398.3	398.3											

P3 FUEL

YEAR	JAN	FEB	MAR	APR	MAY	JUN	JUL	AUG	SEP	OCT	NOV	DEC	AVG
1990	93.8	93.8	93.8	93.8	93.8	93.8	93.8	93.8	107.5	107.5	107.5	127.0	100.0
	20161991, 1992, 1993, ,2010,2011,2012,2013,2014,2015												
2017	928.3	928.3	928.3	928.3	928.3	928.3	928.3	928.3	928.3	928.3	928.3	928.3	928.3
2018	928.3	928.3	928.9	930.8	1021.8	1065.1	1128.2	1153.1	1177.5	1203.4	1166.1	1037.5	1055.8
2019	977.5	991.2	1015.0	1020.7	1017.7	1017.7	1017.7	1017.7	1017.7	1017.7	1017.7	1017.7	1012.1
2020	1017.7	1017.7	1017.7	1017.7	1017.7	1017.7	1017.7	1017.7	1017.7	1017.7	1017.7	1017.7	1017.7
2021	1017.7	1017.7											

TABLE 4 :COST INDICES OF VARIOUS TYPES OF CONSTRUCTION WORK COMPUTED QUARTERLY

YEAR	QUARTER	MODERN HOUSING	SEMI PERMANENT HOUSING	ALL HOUSING	NON RESIDENTIAL BUILDING	IRRIGATION Major	IRRIGATION Minor	ROAD WORKS	WATER SUPPLY & DRAINAGE	OTHER CIVIL WORKS	ALL CIVIL WORKS	ALL CONSTRUCTION
1990	Third Quarter	103.3	104.4	103.4	102.5	101.5	102.0	101.8	101.5	101.5	101.6	102.5
1990	Fourth Quarter	107.2	109.4	107.3	107.1	103.6	105.0	105.5	107.7	106.3	106.0	106.8
,1991,1992,1993,1994,1995,1996,1997,1998,1999,2000,2001,2002,2003,2004,2005,2006,2007,2008,2009,2010												
2011	First Quarter	501.8	738.0	516.5	482.2	361.0	405.9	404.3	487.2	494.9	442.9	481.7
2011	Second Quarter	508.7	762.5	524.5	489.5	362.9	408.7	408.0	491.2	500.8	447.1	488.1
2011	Third Quarter	514.3	780.5	530.8	493.8	363.9	409.9	410.9	491.8	506.1	450.0	492.7
2011	Fourth Quarter	524.1	796.7	541.0	502.2	368.7	416.1	418.3	495.0	514.9	456.6	501.1
2012	First Quarter	547.6	826.9	564.9	527.2	390.6	444.1	444.3	509.5	538.2	479.1	524.7
2012	Second Quarter	569.9	850.2	587.2	550.3	403.8	459.6	463.4	562.9	560.0	505.0	548.6
2012	Third Quarter	583.9	861.4	601.1	561.4	406.7	461.8	466.2	588.3	566.6	513.5	559.9
2012	Fourth Quarter	601.6	871.0	618.3	573.9	412.4	466.6	469.5	570.0	577.9	515.2	570.2
2013	First Quarter	616.4	899.5	633.9	587.2	421.3	480.2	481.0	577.4	586.8	524.8	583.1
2013	Second Quarter	622.2	924.2	640.9	591.4	422.4	482.3	483.0	578.7	589.0	526.6	587.6
2013	Third Quarter	630.7	941.9	650.0	598.5	426.2	488.9	487.8	582.7	592.3	530.8	594.4
2013	Fourth Quarter	633.7	943.7	652.9	600.9	427.0	489.9	489.4	583.3	593.9	532.1	596.6
2014	First Quarter	638.0	948.2	657.2	604.9	428.9	493.4	491.8	585.2	595.1	534.0	599.9
2014	Second Quarter	644.7	957.9	664.1	610.7	432.2	499.3	496.0	588.6	599.0	537.9	605.5
2014	Third Quarter	645.4	983.6	666.7	611.4	432.7	500.0	496.7	589.0	600.0	538.6	606.9
2014	Fourth Quarter	646.8	986.4	667.9	611.4	432.3	498.5	495.2	588.7	602.2	538.6	607.4
2015	First Quarter	654.7	993.6	675.8	615.8	434.4	500.9	495.0	591.7	600.2	538.8	611.7
2015	Second Quarter	662.7	1036.7	685.9	621.5	436.8	508.8	500.8	596.1	600.1	542.2	618.4
2015	Third Quarter	672.8	1040.5	695.6	628.3	438.6	512.1	503.0	598.5	601.7	544.2	624.6
2015	Fourth Quarter	681.4	1051.4	704.3	634.1	439.6	514.2	506.0	600.2	604.0	546.5	630.3
2016	First Quarter	692.7	1061.4	715.5	641.7	442.6	518.6	451.3	603.5	605.0	528.8	629.8
2016	Second Quarter	711.9	1075.5	734.4	654.9	445.7	523.3	452.3	611.8	606.0	531.6	641.5
2016	Third Quarter	720.9	1085.1	743.4	661.2	447.4	525.2	454.1	615.5	615.0	536.0	648.2
2016	Fourth Quarter	728.2	1093.5	750.9	667.2	450.1	530.3	455.1	618.3	624.2	540.1	654.1
2017	First Quarter	738.2	1107.3	761.1	675.3	452.7	535.1	462.0	625.6	629.5	546.0	662.2
2017	Second Quarter	746.7	1120.7	769.9	682.5	468.6	548.2	472.7	632.2	658.0	562.0	673.4
2017	Third Quarter	754.6	1139.2	778.4	692.4	470.4	551.6	476.2	637.9	676.2	570.1	682.1
2017	Fourth Quarter	764.7	1148.6	788.5	701.3	471.5	553.4	480.1	641.4	687.0	575.6	690.2
2018	First Quarter	773.5	1156.9	797.3	707.9	475.3	558.7	485.8	650.3	692.4	581.6	697.4
2018	Second Quarter	780.0	1161.9	803.6	713.9	479.1	565.1	490.5	656.9	699.7	587.4	703.5
2018	Third Quarter	784.6	1169.9	808.5	719.8	482.7	572.9	497.6	662.4	710.8	595.0	709.6
2018	Fourth Quarter	787.2	1171.3	811.0	722.6	493.7	579.5	503.9	664.9	716.3	600.9	713.5
2019	First Quarter	804.1	1186.3	827.8	740.4	497.0	578.4	506.5	686.6	743.7	614.7	729.3
2019	Second Quarter	814.5	1191.7	837.9	748.9	501.0	581.7	511.0	690.4	748.8	619.1	737.0
2019	Third Quarter	816.4	1193.1	839.7	750.4	501.2	581.8	511.4	695.9	748.9	620.4	738.5
2019	Fourth Quarter	828.2	1201.5	851.3	760.0	506.0	591.5	518.5	703.9	751.1	626.0	747.4
2020	First Quarter	837.9	1216.8	861.4	769.5	515.0	609.9	531.8	697.6	754.9	632.2	755.9
2020	Second Quarter	838.1	1216.1	861.6	772.7	513.1	609.6	534.7	699.5	758.5	634.5	757.5
2020	Third Quarter	841.5	1223.0	865.1	779.7	513.4	612.1	537.2	707.0	772.6	641.2	763.0
2020	Fourth Quarter	844.6	1231.3	868.5	782.3	513.9	613.5	538.6	719.3	778.8	646.1	766.8

* Please ignore Table 4 in February bulletin.

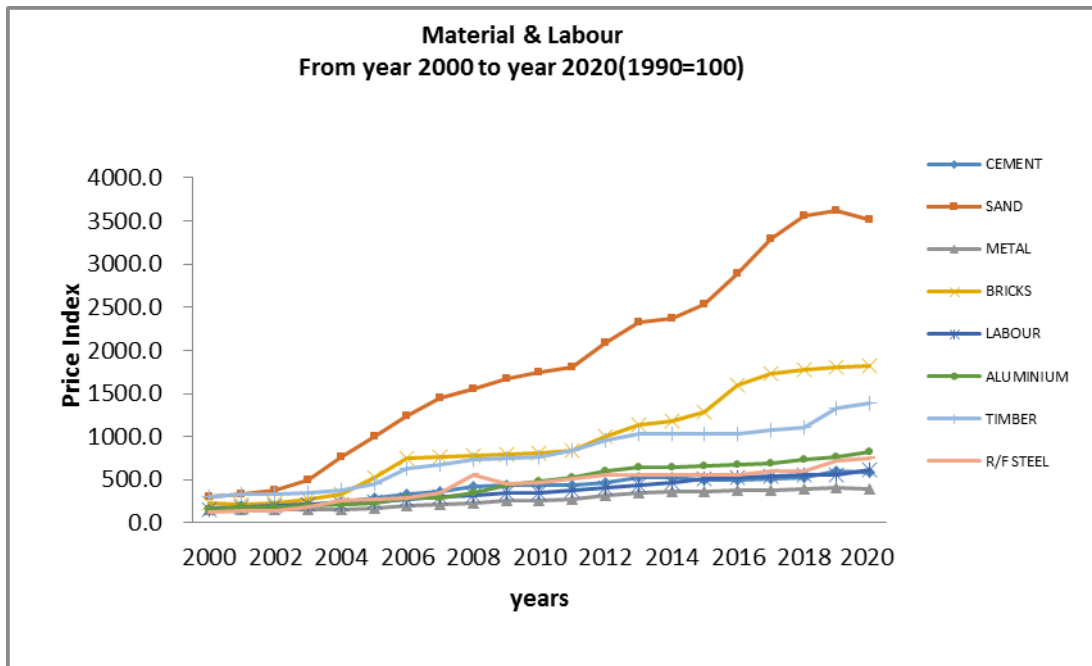
TABLE 5: MONTHLY COST INDICES OF VARIOUS TYPE OF CONSTRUCTION WORK

Base = year 1990(avg.)

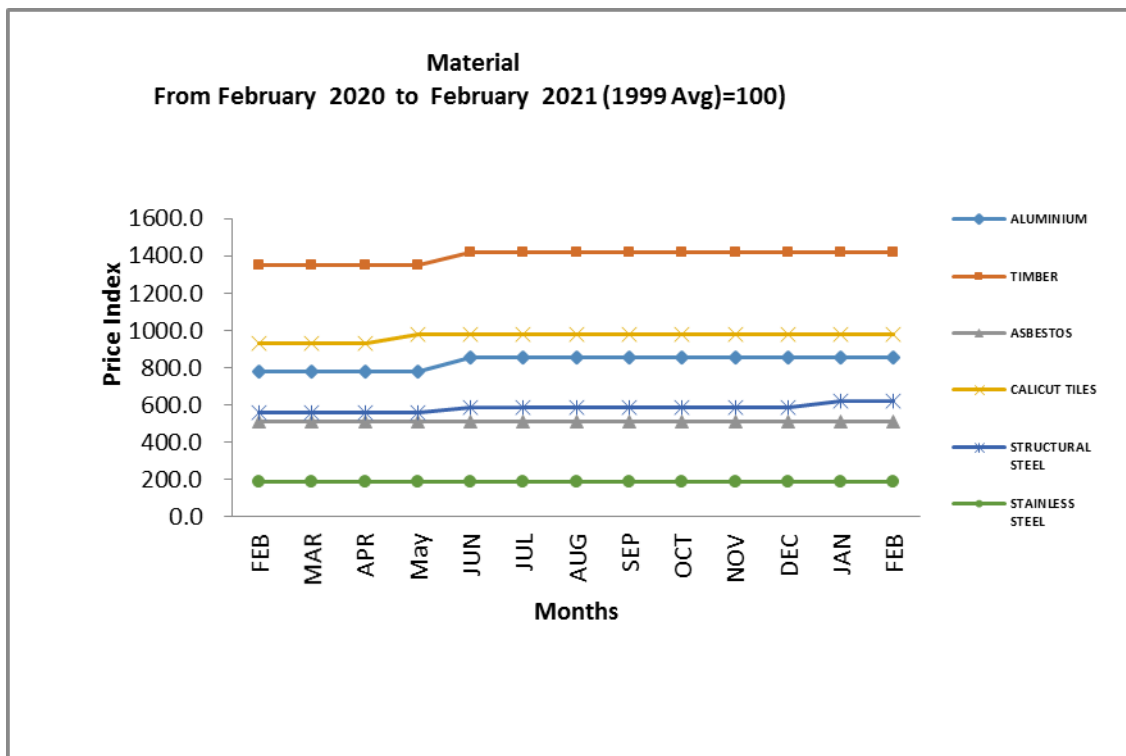
YEAR	MONTH	MODERN HOUSING	NON RESIDENTIAL BUILDING	WATER SUPPLY & DRAINAGE
1990	Monthly average	100.0	100.0	100.0
1991 to 2016 May				
2016	October	727.1	666.1	618.1
	November	727.9	667.0	618.3
	December	729.7	668.5	618.5
2017	January	735.5	672.6	623.7
	February	736.5	673.4	624.1
	March	742.7	679.8	629.0
	April	742.9	680.3	631.0
	May	747.3	682.8	632.3
	June	749.8	684.4	633.4
	July	750.8	685.6	634.0
	August	754.8	694.5	639.3
	September	758.1	697.0	640.3
	October	760.2	698.3	640.8
	November	766.9	702.8	583.7
	December	767.6	703.3	642.0
2018	January	769.2	704.6	648.1
	February	770.8	704.8	648.3
	March	777.3	710.9	652.0
	April	778.1	711.4	652.1
	May	780.7	714.7	658.9
	June	781.1	715.7	659.6
	July	783.7	718.2	661.3
	August	784.7	719.2	662.0
	September	785.3	721.2	663.3
	October	788.4	729.6	669.6
	November	788.5	731.3	668.4
	December	787.7	730.1	666.8
2019	January	789.4	729.6	676.8
	February *	809.5	745.4	692.8
	March	813.4	749.3	690.3
	April	813.7	749.6	690.4
	May	814.7	750.0	690.4
	June	815.9	750.8	690.4
	July	816.5	751.4	690.4
	August	816.6	751.6	698.7
	September	817.2	753.6	698.7
	October	821.8	755.3	699.0
	November	821.8	755.3	699.0
	December	842.2	762.5	698.4
2020	January	842.4	773.0	698.5
	February	839.5	771.5	698.2
	March	837.4	770.3	696.3
	April	837.4	770.3	696.3
	May	836.5	768.9	695.7
	June	840.5	778.8	701.0
	July	840.8	779.1	701.0
	August	841.0	779.2	701.0
	September	842.7	780.9	701.3
	October	842.7	780.9	701.3
	November	842.7	780.9	701.3
	December	848.4	785.2	742.0
2021	January	849.8	790.3	753.2
	February	856.8	793.9	754.6

*Due to error in M21 F/wk timber monthly cost indices in February shall revised

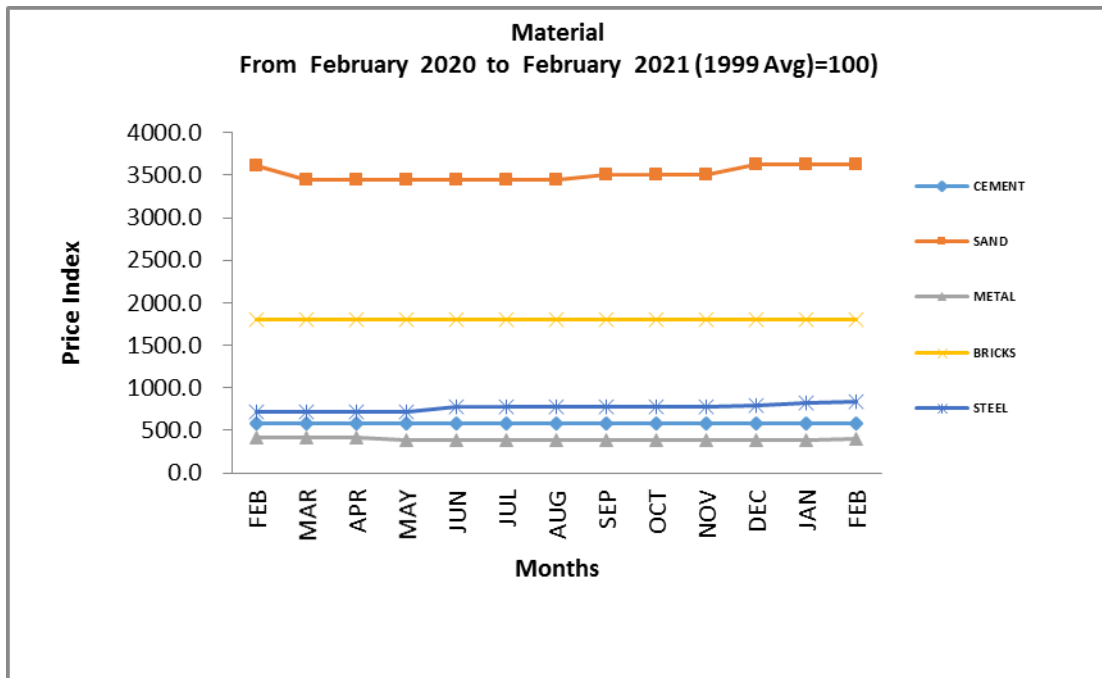
VARIATIONS IN PRICE INDICES



Graph I -Variation in price Indices –Annually



Graph II (a) - Variation in price Indices - Monthly



Graph II (b) - Variation in price Indices - Monthly

Notes to Graph I : This graph indicates the annual changes in Price Indices of Labour & commonly used building materials. Prices of most of the building materials continue to increase up to the year 2012. Significant increases are shown in Sand & Bricks. Also slight increases are shown in Cement, Metal, Steel, Aluminum, Labour & General Timber.

Notes to Graph II (a) & II (b)

: These two graphs indicate the monthly changes in Price Indices of commonly used building materials.